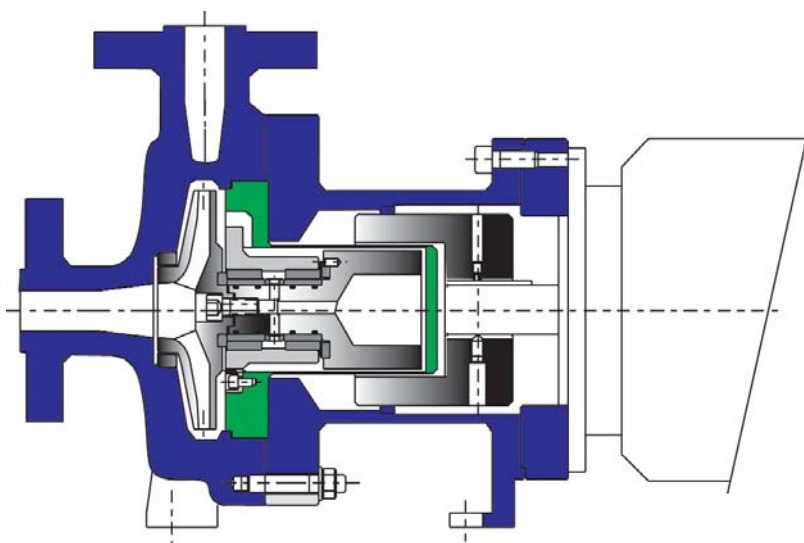


# High System Pressure

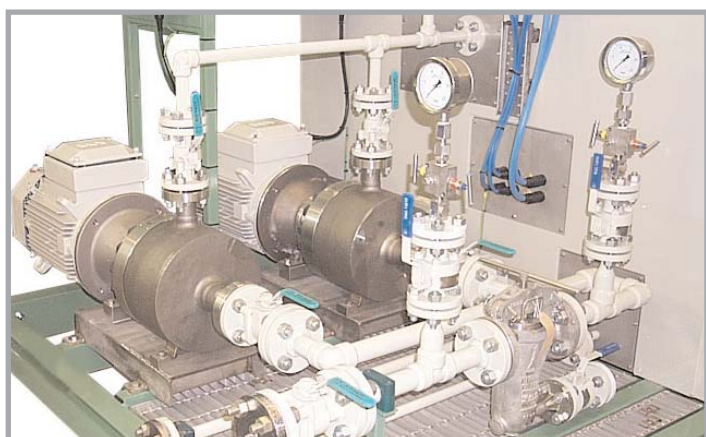
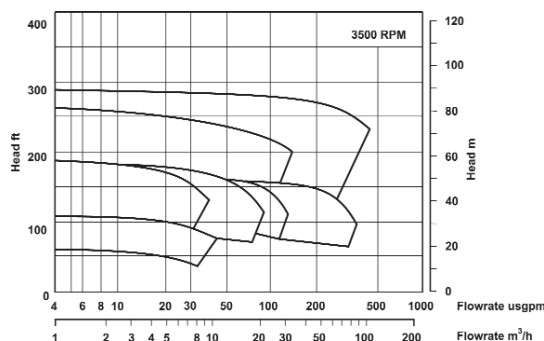
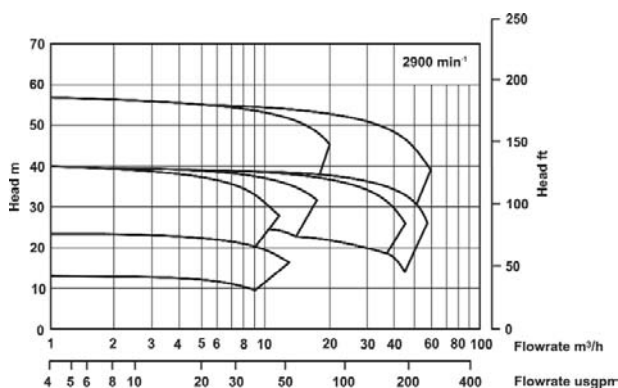
- Seal/less design - total product containment - ideal in the petrochemical and site utilities.
- Modular/Interchangeable high efficiency wet end, designed to provide maximum flow/head coverage across all product ranges.
- High efficiency magnetic couplings.
- Various metallic materials of construction available on request.
- System pressures up to 185 bar 2680 psi.
- Ideal sampling unit.



Head	Flow	Temperature	Pressure
90 m	100 m <sup>3</sup> /h	-40 to +205°C	up to 185 bar
295 ft	440 usgpm	-40 to +400°F	up to 2680 psi

Standard construction is Stainless Steel with Silicon Carbide internal bearings. Options of other materials are available on request.

Various flange options are available as standard.



Picture courtesy of Jiskoot Autocontrols Ltd

## Accuracy under high pressure

Original equipment manufacturers worldwide have discovered the benefits of the HPGS pump when checking the density of fluids passed down a high pressure pipeline. The pump is used on these skids to take a sample of the fluid out of the main product stream. The sample is then passed through the densitometer, which analyses the fluid, and afterwards returned to the main pipeline.

Its ability to withstand system pressures up to 185 bar, together with its sealless construction, means that the HPGS eliminates the need for the expensive callouts, downtime and repairs associated with mechanical sealed pumps. Quite simply, the HPGS outperforms the competition on both cost and efficiency.