



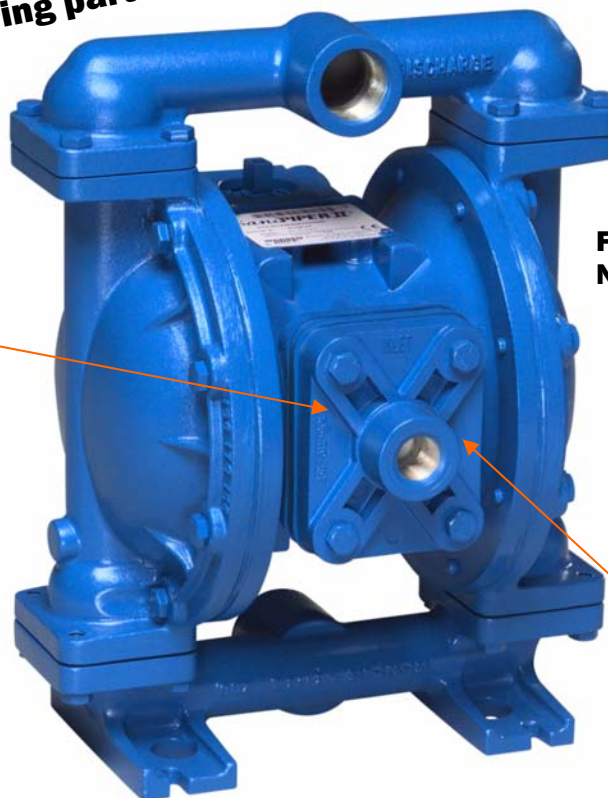
**KelairPumps**

## S1F Metallic

### SANDPIPER AIR-OPERATED DIAPHRAGM PUMPS

**5-year warranty  
(wearing parts excluded)**

**Externally serviceable  
air valve design (ESADS)**



**Fully bolted design  
No clamp bands**

**No lube,  
non-stall air  
valve design  
GUARANTEED**

### FEATURES & BENEFITS

- Size: 1.0" BSPT
- Flow: 170 l/m
- Head: 8.6 bar
- Solids: Up to 6mm
- Wetted Materials
  - Aluminium
  - Cast Iron
  - 316 Stainless Steel
  - Hastelloy C
- Non-wetted Materials
  - Aluminium
  - Cast Iron
- Elastomer Options
  - Santoprene
  - Buna N
  - Teflon
  - Neoprene
  - EPDM
  - Viton
  - Uni Rupp PTFE
  - Hytrel

**Call Kelair Direct 1300 789 466**



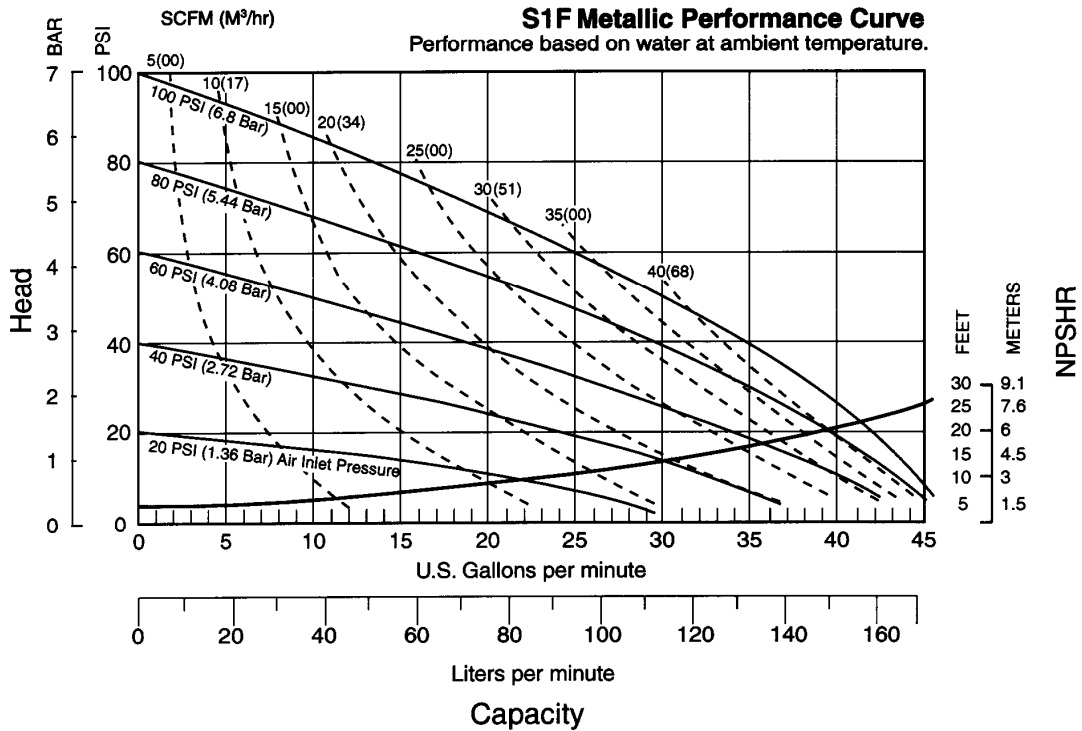


**KelairPumps**

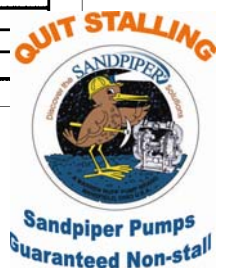
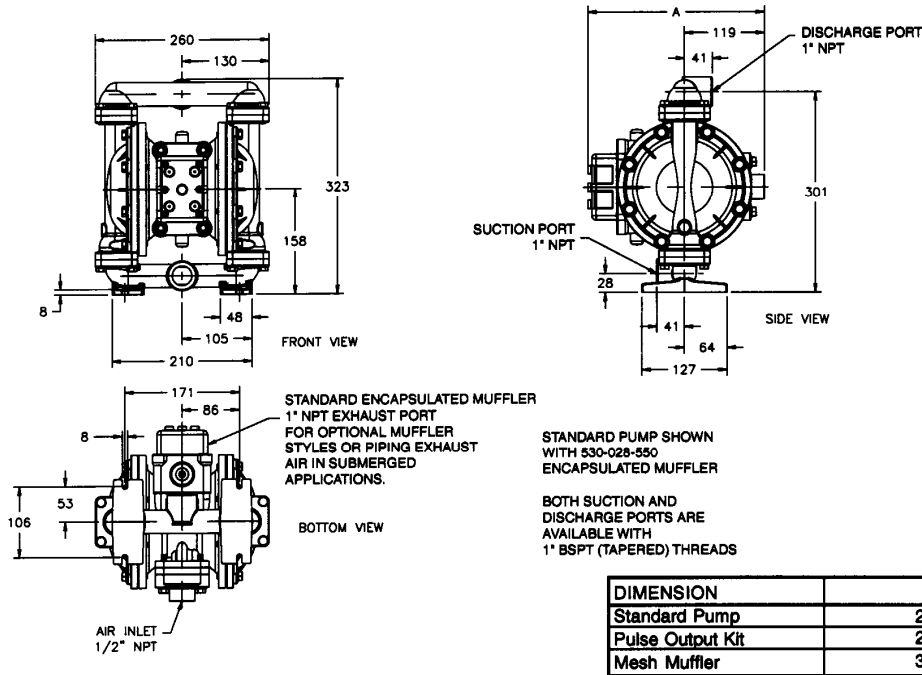
# S1F Metallic

<b>INTAKE/DISCHARGE PIPE SIZE</b> 1" NPT (Internal) 1" BSPT Tapered (Internal)	<b>CAPACITY</b> 0 to 45 gallons per minute (0 to 170 liters per minute)	<b>AIR VALVE</b> No-lube, no-stall design	<b>SOLIDS-HANDLING</b> Up to .25 in. (6mm)	<b>HEADS UP TO</b> 125 psi or 289 ft. of water (8.6 Kg/cm <sup>2</sup> or 86 meters)	<b>DISPLACEMENT/STROKE</b> .11 Gallon / .42 liter
--	---	---	---	--	--

Sandpiper pumps are designed to be powered only by compressed air



Dimensions in Millimeters  
Dimensional Tolerance: ± 3mm



Kelair Pumps Australia Pty Ltd Gateway Estate 215 Walters Road Arndell Park NSW 2148  
Call Direct: 1300 789 466 Fax: 02 9678 9455 ABN 28 001 308 381  
E: kelair@kelairpumps.com.au www.kelairpumps.com.au

SPS1FMet-12-0308