

**WARREN
RUPP®**

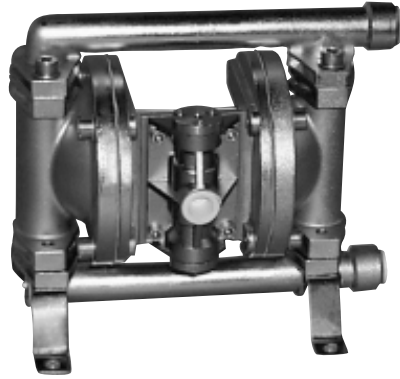
SANDPIPER®

A WARREN RUPP PUMP BRAND

Quality System
ISO9001 Certified

Environmental
Management System
ISO14001 Certified

IDEX
IDEX CORPORATION

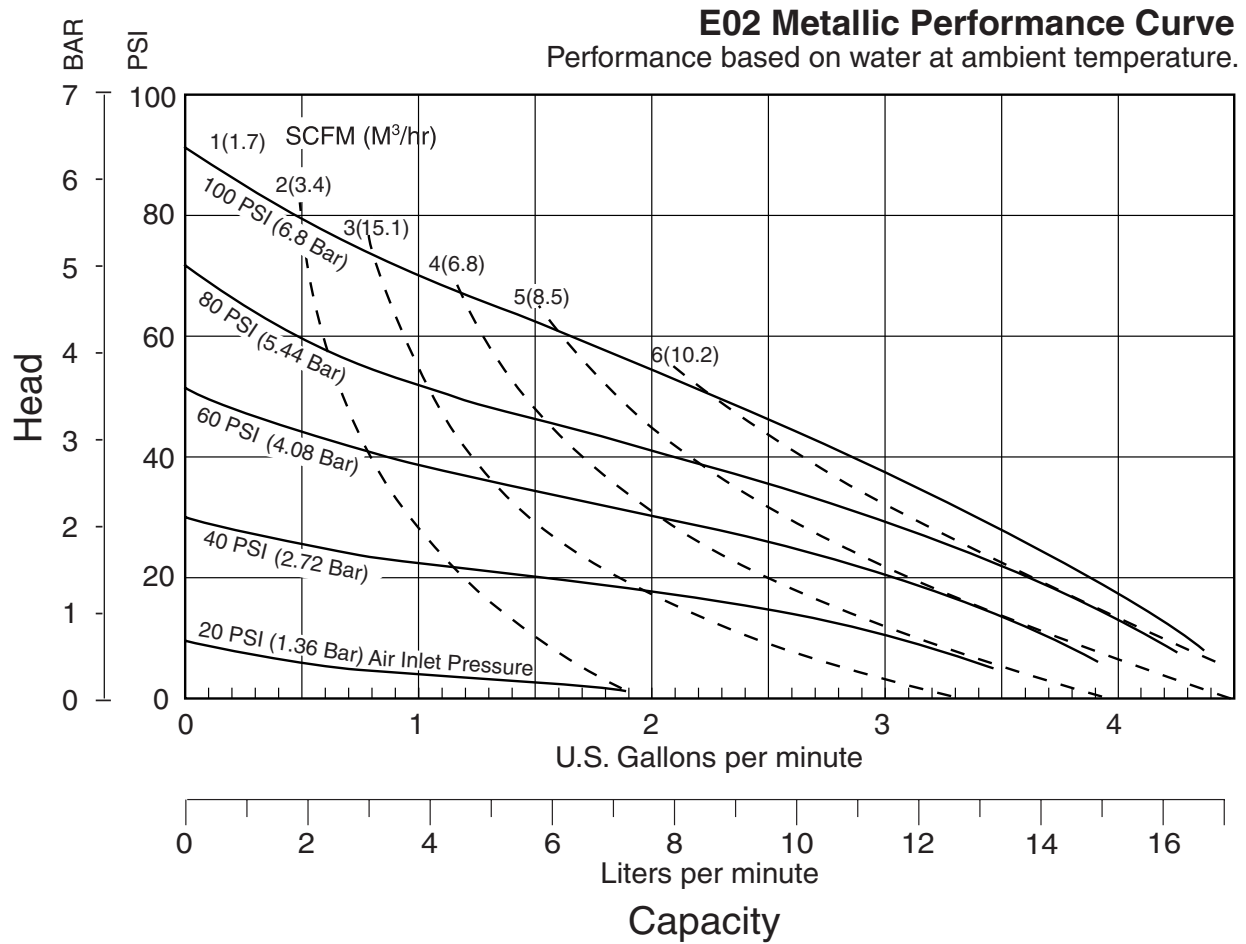


**E02 Metallic
Design Level 1
Ball Valve**

**Air-Powered
Double-Diaphragm Pump**

ENGINEERING, PERFORMANCE
& CONSTRUCTION DATA

INTAKE/DISCHARGE PIPE SIZE	CAPACITY	AIRVALVE	SOLIDS-HANDLING	HEADS UP TO	DISPLACEMENT/STROKE
1/4" NPT (Internal)	0 to 4.4 gallons per minute (0 to 16.6 liters per minute)	Non-stall design	Up to .079 in. (2 mm)	125 psi or 288 ft. of water (8.6 Kg/cm ² or 86 meters)	.003 Gallon / .01 liter



SANDPIPER® pumps are designed to be powered only by compressed air.

E02 Metallic • Design Level 1 • Ball Valve

MODEL	Pump Brand	Pump Size	Check Valve Type	Design Level	Wetted Material	Diaphragm/Check Valve Materials	Check Valve Seat	Non-Wetted Material Options	Porting Options	Pump Style	Pump Options	Kit Options	Shipping Weight lbs. (kg)
E02B1SYSSNS000.	E	02	B	1	S	Y	S	S	N	S	0	00.	8.8 (4)
E02B1SZSSNS000.	E	02	B	1	S	Z	S	S	N	S	0	00.	8.8 (4)

Pump Brand
E=SANDPIPER Metallic

Wetted Material
S=Stainless Steel

Check Valve Seat
S=Stainless Steel

Pump Style
S=Standard

Pump Size
02=¼"

Diaphragm/Check Valve Materials
5=PTFE-Buna
One-Piece/PTFE

Non-Wetted Material Options
S=Stainless Steel

Pump Options
0=None

Check Valve Type
B=Ball

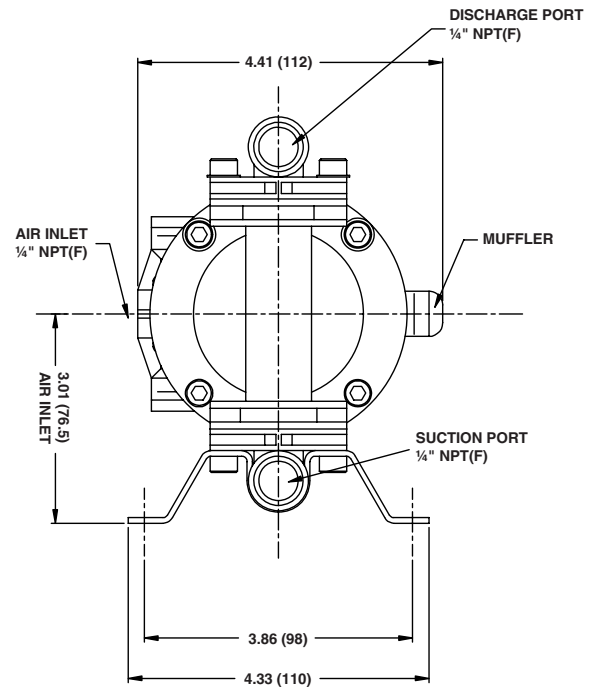
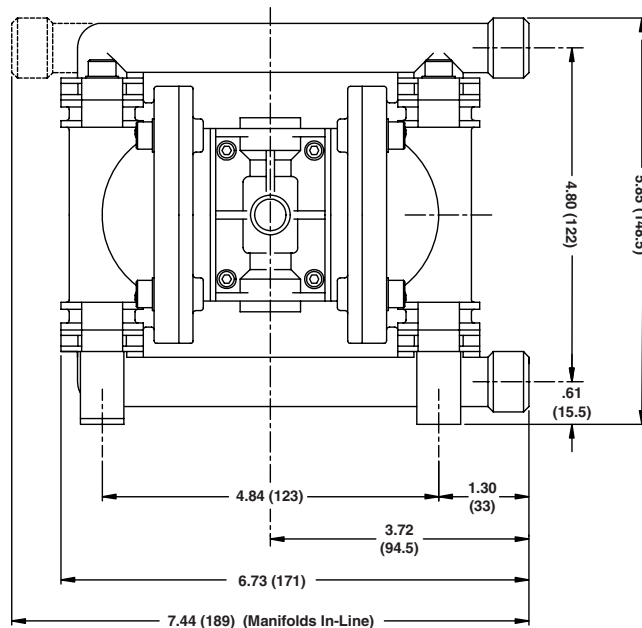
6=PTFE-Buna
One-Piece/Stainless Steel
Y=Polyester backup/TFE/TFE
Z=Polyester backup/TFE/
Stainless Steel

Porting Options
N=NPT Threads

Kit Options
00.=None

Dimensions: E02

Dimensions in inches (metric)



Materials

Virgin PTFE Chemically inert, virtually impervious. Very few chemicals are known to react chemically with Teflon: molten alkali metals, turbulent liquid or gaseous fluorine and a few fluoro-chemicals such as chlorine trifluoride or oxygen difluoride which readily liberate free fluorine at elevated temperatures.

For specific applications, always consult The Warren Rupp Chemical Resistance Chart

Operating Temperatures

Maximum	Minimum
220°F 104°C	-35°F -37°C